




Location Map




Location Symbols

-  Bus stop/Request stop
-  Railway Station
-  Walk Location

Essential Information

Distance:
5.5 miles/8.5 kms

Walk grade:
 Typical country walk with hills, some stiles and muddy paths (depending on weather)

Maps:
OS Explorer 135
OS Landranger 188

Start/Finish:
Crowborough Railway Station
TQ 535297 or alternative start in Rotherfield TQ 556298

Public Transport:
Buses: Regular bus services operate between Tonbridge and Jarvis Brook, and between Tunbridge Wells and Eastbourne with a stop at the alternative start in Rotherfield
Trains: Crowborough station at Jarvis Brook is on the Uckfield to London line which has a regular seven day service.

Parking:
Parking is available in Jarvis Brook and at the alternative start in Rotherfield



Rotherfield Walk



Paths to Prosperity

East Sussex is a welcome haven for walkers in the busy south-east of England, with over two thirds of the County covered by the High Weald and Sussex Downs Areas of Outstanding Natural Beauty.

There is also a wealth of picturesque villages, country houses and parkland hidden within its rolling landscape, waiting to be discovered.

Please come and enjoy the unique splendours of our countryside, but please also support the local businesses that help make the countryside the vibrant place that it is today.

The Countryside Code

- Be Safe - plan ahead and follow any signs
- Leave gates and property as you find them
- Protect plants and animals, and take your litter home
- Keep dogs under close control
- Consider other people

The information contained in this leaflet was correct at the time of printing (June 2005)

Refreshments and Local Services

(see map for location)

- 1 Whistle Stop Cafe**
Restaurant - 01892 663518
- 2 Jarvis Brook Bakery**
Bakery - 01892 662490
- 3 Rotherfield Post Office**
Post Office - 01892 852050
- 4 Rotherfield General Stores**
Grocery Shop - 01892 852377
- 5 The Catts Inn**
Public House - 01892 852546
- 6 Highgate Florist & Growers**
Florist and Market Gardening - 01892 852783
- 7 St Deny's Pharmacy**
Pharmacy - 01892 852352
- 8 Kings Arms**
Public House - 01892 853441
- 9 Davenport Vineyards**
Vineyard and Winery - Castle Hill, Rotherfield, 01892 582380

- 10 The Millbrook Garden Company Ltd**
Garden Centre and Restaurant - 01892 663822

Please note that inclusion of business details in this leaflet does not constitute an endorsement of the business by East Sussex County Council or its agents.

We hope that you enjoy the walk in this leaflet, which is one of a series produced by East Sussex County Council.

Copies of the leaflets for other walks in the series are available from Tourist Information Centres and libraries or direct from East Sussex County Council, by contacting the Rights of Way Team:-

By phone on:-
01273 482250 / 482354 / 482324

By post at:-
Transport and Environment Department
County Hall
St. Anne's Crescent
Lewes BN7 1UE

By e-mail at:-
rightsofway@eastsussex.gov.uk

By downloading from the website at:-
www.eastsussex.gov.uk






If any problems are encountered on the walk please report them to the above contact points.

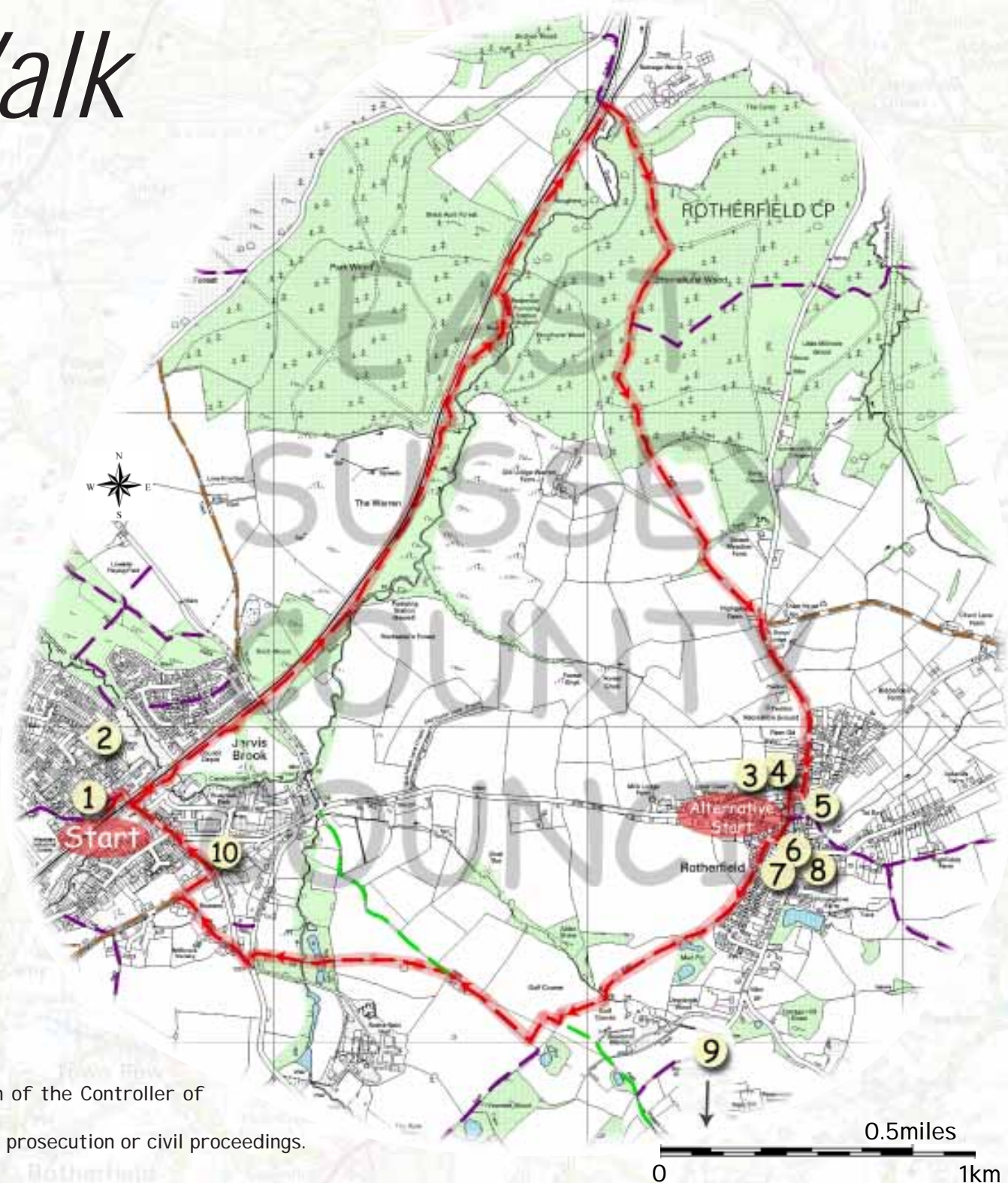
Rotherfield Walk



The path through the woodland

Map Legend

-  Refreshments & Local Services (see over for details)
-  Route
-  Other Public Footpaths
-  Other Public Bridleways
-  Byways Open to All Traffic



Starting from the station at Jarvis Brook, turn right to follow Station Approach to its junction with Crowborough Hill. Turn right to follow the road under the railway bridge, and immediately after the bridge, turn left, crossing the road, to join the signposted footpath running alongside the railway line.

Follow the path keeping to the route beside the railway, to reach Palesgate Lane. Cross the road and continue to follow the path alongside the railway for a total distance of approximately 2 kilometres (1 $\frac{1}{4}$ miles). *Most of this section of the route runs through the Woodland Trust wood of Old Lodge Warren. Sandwiched between the railway and the Crowborough Ghyll, there are some great views looking down into this classic, deep Wealden Ghyll.* Just past the remains of an old pumping station, a large footbridge and World War Two pill-box are reached. Ignore the footbridge to the right, instead continue to follow the narrow path behind the pill-box and on to reach a stile.



Bluebells in Old Lodge Warren Wood

From the stile, continue straight ahead for a short distance to reach a footpath junction. Turn right across the large footbridge and follow the path to the rear of the Southern Water treatment works.

Follow the route uphill, across the first track reached, to continue ahead, as signposted, into Hornshurst Wood. Continue along the wide track to reach the next main junction. Turn right and follow this track, continuing straight ahead at the next signposted footpath junction. Just before reaching the left hand bend in the track, turn left onto the signposted footpath. Follow the path uphill as signposted, crossing the next track, before continuing in the direction indicated by a further signpost.

At the woodland edge, continue to follow the fenced path straight ahead, as signposted to reach a stile. Cross the field to a second stile, and then on to a third stile, half way along the field boundary. Bear left after the stile, and follow the track to reach the road. Turn right to follow the road into the centre of Rotherfield. Turn right on reaching the junction in Rotherfield, beside Rotherfield General Stores.

Immediately before reaching the church, turn left to follow Church Path, along the edge of the churchyard. Bear right after the kissing gate to follow the route along the edge of the small car park, and on, between the houses. On reaching the road, turn right, and then left at the next junction. Follow this road for a short distance, and as the road bears left, follow the footpath, beside number five Court Meadow.



A lake alongside the route

Continue along the route behind the houses of Court Meadow Close. Bear right as the path opens onto a small meadow area, and continue past the pond. The route now follows a well defined route across the next field heading towards the golf course. From the footbridge at the field edge, follow the signposted route across the golf course. On reaching the boundary on the far side of the golf course, turn right to follow the route between the boundary hedge and fenceline.

Follow this enclosed route for approximately 350 metres (380 yds.) before turning left through a handgate onto the waymarked footpath. Follow the route to the right of a clump of trees, and from the waymark post, continue downhill along the field edge path, with the boundary to your left. From the gate in the field corner, continue along the enclosed path, crossing over a deep ghyll, and onward to reach a stile at Clackhams Lane. Turn left and then right onto Treblers Road.

After a short distance, turn left onto the surfaced driveway signposted to Millbrook Nurseries. On reaching the entrance to the Nursery, continue straight ahead, to the right of the gates. Turn right at the end of this short section of Byway, and follow the road to the next road junction. Turn left and follow Mottins Hill, turning left at the end, to join the main road. Follow the road under the railway bridge, and after a short distance, turn left to return to the station and the end of the walk.